

PERFORMANCE

Processor

Intel® Core™ i7-10510U (4C / 8T, 1.8 / 4.9GHz, 8MB)

Graphics

Integrated Intel UHD Graphics

Chipset

Intel SoC Platform

Memory

16GB Soldered DDR4-2666

Memory Slots

Memory soldered to systemboard, no slots

Max Memory

Soldered memory, not upgradable

Storage

512GB SSD M.2 2280 PCIe 3.0x4 NVMe Opal2

Storage Support

One drive, 1x M.2 2280 SSD or 1x M.2 2242 SSD

- M.2 2280 SSD up to 2TB
- M.2 2242 SSD up to 512GB
- Optional Intel Optane™ Memory integrated with SSD, M.2

Card Reader

MicroSD Reader

Optical

None

Audio Chip

High Definition (HD) Audio, Realtek® ALC3287 codec

Speakers

Stereo speakers, 1W x2, Dolby® Audio™

Camera

720p + IR with ThinkShutter

Microphone

2x, Array

Battery

Integrated 57Wh

Max Battery Life

MobileMark® 2014: 21 hr

MobileMark 2018: 14.28 hr

Power Adapter

65W USB-C

DESIGN

Display

14" FHD (1920x1080) Low Power IPS 400nits Anti-glare

Touchscreen

None

The product image is a sample, it may not match the real color of this model

For a full list of this model's configurations and device specifications, please visit: <https://psref.Lenovo.com>

Keyboard

Backlit, German

Case Color

Black

Case Material

CFRP Hybrid (Top), Magnesium (Bottom)

Dimensions (WxDxH)

328.8 x 225.8 x 16.1 mm (12.94 x 8.89 x 0.63 inches)

Weight

1.27 kg (2.81 lbs)

SOFTWARE

Operating System

Windows® 10 Pro 64, German

Bundled Software

None

CONNECTIVITY

Ethernet

100/1000M via Optional Adapter

WLAN + Bluetooth™

Intel AX201 11ax, 2x2 + BT5.1

WWAN

Fibocom L850-GL

SIM Card

None

NFC

None

Standard Ports

- 1x USB 3.2 Gen 1
- 1x USB 3.2 Gen 1 (Always On)
- 1x USB-C 3.2 Gen 1 (support data transfer, Power Delivery and DisplayPort™ 1.2)
- 1x USB-C 3.2 Gen 2 / Thunderbolt™ 3 (support data transfer, Power Delivery and DisplayPort 1.2)
- 1x HDMI® 1.4b
- 1x Ethernet extension connector
- 1x headphone / microphone combo jack (3.5mm)
- 1x side docking connector

Optional Ports

- 1x Nano-SIM + microSD card slot (LTE model)
- 1x Smart Card Reader

Monitor Cable

None

SECURITY & PRIVACY

Smart Card Reader

Smart Card Reader

Security Chip

Discrete TPM 2.0

Fingerprint Reader

Touch Style, Match-on-Chip

Physical Locks

Kensington® Security Slot

Other Security

- IR camera for Windows® Hello
- ThinkShutter camera cover

MANAGEABILITY

System Management

None

SERVICE

Base Warranty

3-year, Depot

Bundled Service

None

ACCESSORIES

Bundled Accessories

None

CERTIFICATIONS

Green Certifications

- EPEAT™ Gold
- ENERGY STAR® 8.0
- RoHS

Mil-Spec Test

MIL-STD-810G military test passed

MODEL

TopSeller : Yes

Announce Date : 2020-05-22

EAN / UPC / JAN : 0194778750066

End of Support : 2026-12-05

Premier Support - A direct 24x7x365 line to our most elite technicians.



Advanced technical support, 24x7x365, in more than 100 markets



Technical Account Managers for proactive relationship and escalation management



Comprehensive hardware & OEM software support



Priority on service delivery and repair parts



Single point of contact for simplified end-to-end case management



Lenovo Service Connect Portal for customized reporting and product support

Accidental Damage Protection - Protection of your PC from the unexpected.

Experience shows that a significant portion of devices may be damaged (and not covered under warranty) in the first three years. Lenovo's Accidental Damage Protection service covers accidents beyond the system warranty such as drops, spills, bumps and even electrical surges. Make sure your new device has maximum protection, avoid unplanned costs and get peace of mind.

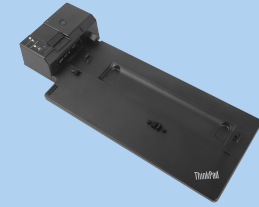
Base Warranty - Included with the systems you purchase, default 1- or 3-year coverage window.

Warranty Extensions & Upgrades - Service and protection that's right for your circumstances.

- Pick Up & Return Courier
- Onsite Support
- Technician Installed Customer
- Replaceable Unit Service
- International Warranty Upgrade

Lenovo may not offer the products, services or features discussed in this document in all regions. Lenovo may withdraw an offering at any time. Information is subject to change without notice. Consult your local representative for information on offerings available in your area. Lenovo reserves the right to change specifications or other product information without notice. Lenovo is not responsible for photographic or typographical errors. Lenovo provides this publication "as is" without warranty of any kind, either express or implied, including the implied warranties of merchantability or fitness for a particular purpose.

Recommended Accessories



ThinkPad Pro Docking Station (American Standard Plug)

40AH0135US

The innovative side connector of the ThinkPad Pro Docking Station, designed exclusively for ThinkPad notebooks, provides a driver-free way to connect conveniently and securely to a range of USB accessories and externa...

Recommended Services

BEST	5Y Premier Support Upgrade from 3Y Depot/CCI (5WS0T36204)
BETTER	4Y Premier Support Upgrade from 3Y Depot/CCI (5WS0T36185)
GOOD	3Y Premier Support Upgrade from 3Y Depot/CCI (5WS0T36152)

For a full list of accessories and services, please visit:
<https://smartfind.Lenovo.com>



PSREF
Product Specifications
Reference